

- Specialized module for localization and monitoring of wild and free going animals
- Integral, 50 channels GPS receiver with highest sensitivity (-162 dBm) SuperSense® technology
- Integral, quad-band GSM modem
- 1 binary/supply output \*
- Large 30k records data logger
- Serial port (1,8 V)
- 3 axis accelerometer

\* option



Energy saving location module ML-941 is a specialized telemetry module dedicated to monitor wild animals and other mobile objects.

Module's design is based on latest GPS/GSM technologies securing precise location and reliable operation in changing GSM propagation conditions.

The module is manufactured as OEM without dedicated housing.

**Resources**

- 1 binary/supply output
- Main supply input with voltage monitoring
- Real Time Clock
- 30k records logger with option of expanding to 60k

**Functionality**

- Cyclical location computing based on received GPS signals
- Detection of missing GPS signal
- Reporting according to defined criteria of time, motion, activity
- Logging of information when GSM communication is not available

- Transmission modes
  - GPRS – packet transmission
  - SMS
- Transmitting information according to time schedule
- Configurable home and roaming transmission parameters
- Dynamic SMS compilation allowing sending current measurement data
- Adjustable SMS transmission limit
- Remote configuration via GPRS/SMS - the module is preconfigured by manufacturer
- Configurable access security list for IP addresses and phone numbers
- Monitoring of power supply voltage
- Monitoring of internal parameters state
- 3-axis accelerometer
  - motion detection
  - activity detection
- Optional silicone rubber molding to achieve IP65 ingress protection
- Reed-switch activated storage mode
- LED module's status indicator
- Serial port for communication with extension modules



**General**

Dimensions (length x width x height)	62,5 x 33 x 11 mm
Weight	25 g
Mounting method (proprietary)	user defined
Operating temperature	-40 to +50 °C
Protection class	none (IP65 optional)

**GSM/GPRS Modem**

Modem type	SAKA G350
GSM	GSM Quad Band (850/900/1800/1900)
GPRS class	10
Antenna	built in antenna

**GPS receiver**

Receiver type	µblox SAM-M8Q
Sensitivity (GPS tracking)	-164 dBm
Channel number	72
Antenna	built in passive antenna

**Power supply**

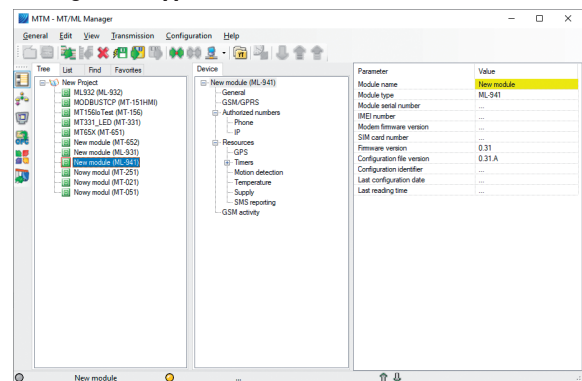
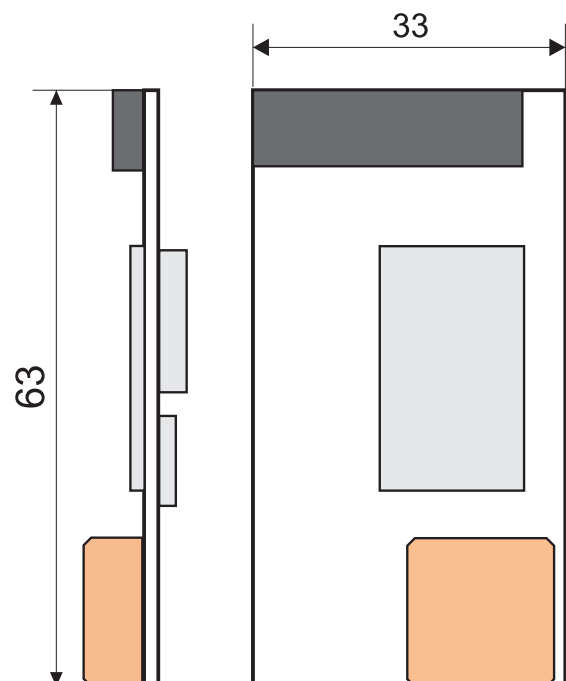
DC voltage	2 – 5 V
Current in active state (mA)	50 mA (average) 400 mA (max.)
Current in sleep state (µA)	< 50 µA (activity control off) < 200 µA (activity control on)

**Serial ports**

Standard	RS-TTL (1,8 V)
Application	external sensors

**Binary output/power supply**

Maximum current	50 mA
Logic level "0"	0,0 – 0,3 V
Logic level "1"	3,5 – 3,8 V
Application	external power supply (VHF)

**Configuration application****Drawings and dimensions  
(all dimensions in millimeters)**

ML-941

**Supplementary information:**

# inventia

INVENTIA Sp. z o.o.

Poleczki 23, 02-822 Warsaw, POLAND

tel.: +48 22 545-32-00, 545-32-01

fax: +48 22 643-14-21

inventia@inventia.pl, www.inventia.pl



INVENTIA complies with ISO 9001:2015 certified Quality Management System!  
This project is co-financed by the EUROPEAN UNION  
from the European Regional Development Fund resources.